

065911

(d) Z Canis Majoris

Scale: 20" / mm

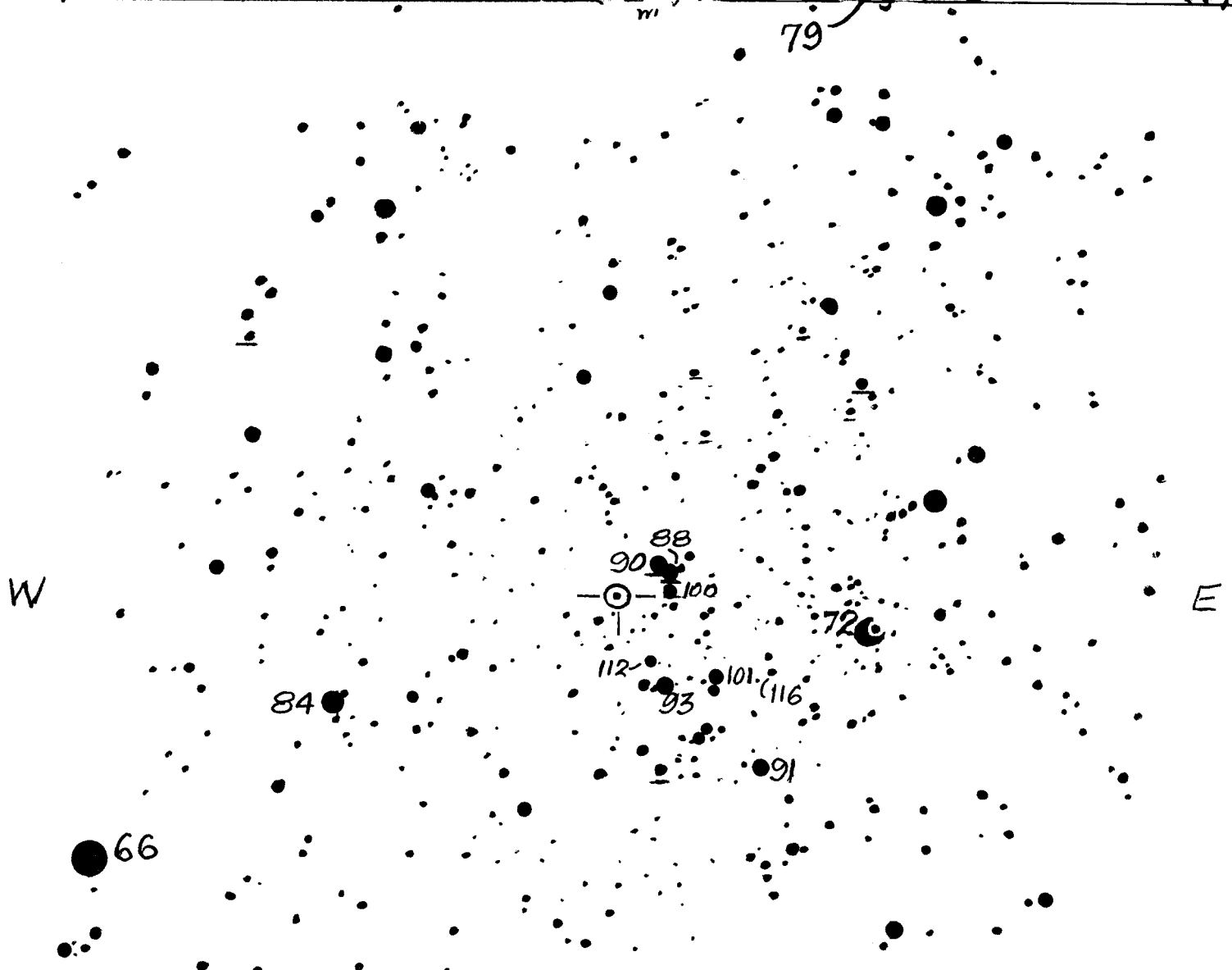
(1900) 06^h59^m02^s - 11° 24.3'

(2000) 07^h03^m43^s - 11° 32.3'

PRELIMINARY
CHART SUBJECT TO
CORRECTION

Spec. Bep Period (?) (SD)

Magn. 8.4 - 11.5 (v)



Note: 88 and 90
are Magns. of the
brighter component
only of each double
star as plotted.

72 = USNO Cat. PEP (v) Magn.
N

From Slmfd Photo;
Sequ: B.A.A., 1915(?)

AAVSO Chart (d)

Photo: CES, 1969
Chart: CBF, 1969